



Erasmus+



FROM SCHOOL TO LIFE-MY KNOWLEDGE HELPS ME IN MY DAILY LIFE

SMART CITY

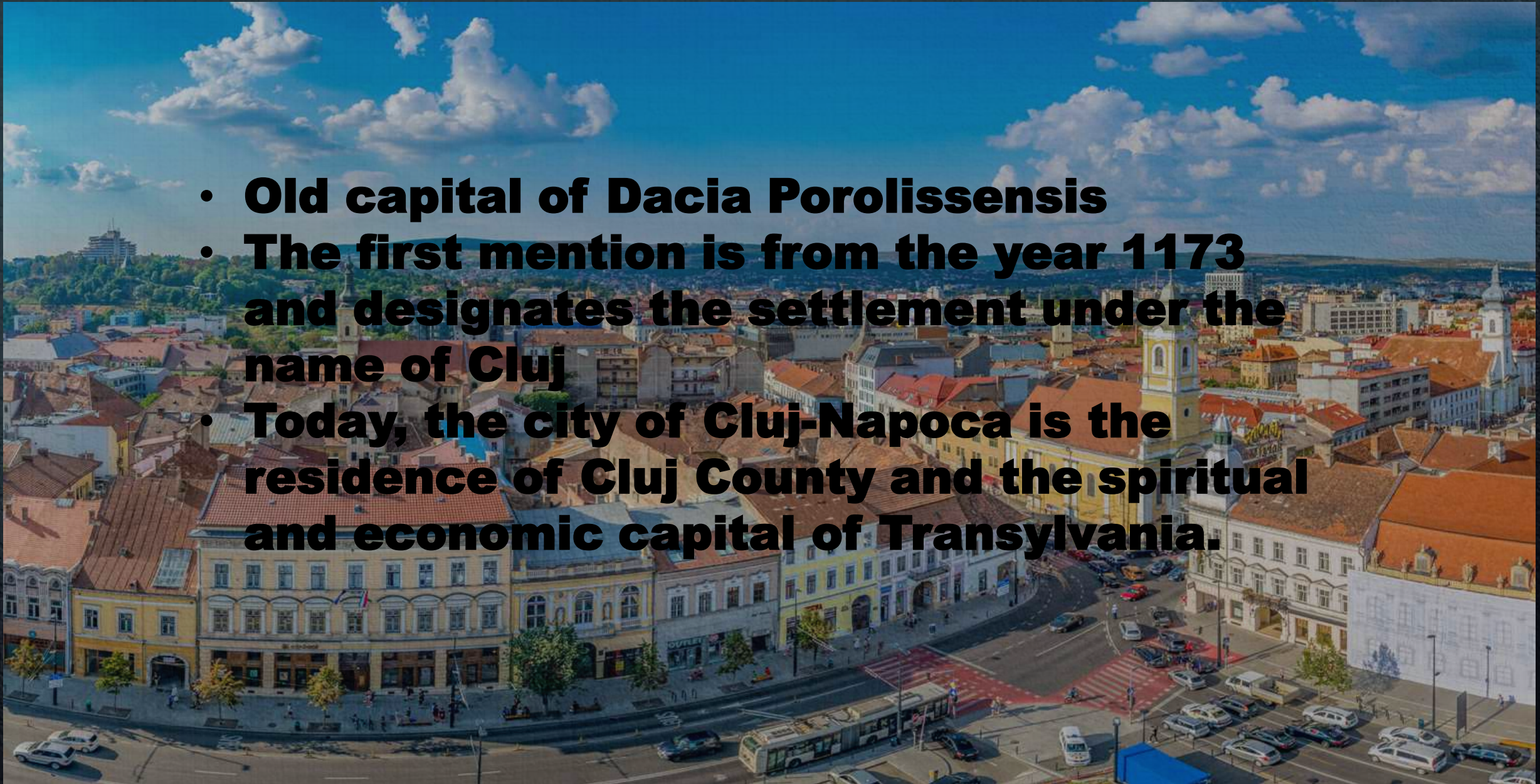
2020-2022

WHAT IS A SMART CITY

A smart city is a concept of urban development that integrates technologies and systems to efficiently and securely manage a city's resources, in order to improve the quality of life of citizens, community development and environmental protection. Therefore a smart city is Cluj-Napoca.

CLUJ-NAPOCA

- **Old capital of Dacia Porolissensis**
- **The first mention is from the year 1173 and designates the settlement under the name of Cluj**
- **Today, the city of Cluj-Napoca is the residence of Cluj County and the spiritual and economic capital of Transylvania.**



ECO TRANSPORT

- Cluj has 41 electric buses, the first electric bus that started running on the streets of the city was in the summer of 2018 and since then the number has increased.
- Buses also have some features that make them stand out. All have free WI-FI internet for passengers, heating system in the cold season, air conditioning system for the hot season, on-board computer for traffic management and management, plus other benefits.



ONLINE SERVICES



PRIMĂRIA ȘI
CONSILIUL LOCAL
CLUJ NAPOCA

COMMUNITY

HABITATION

ADMINISTRATION

MEDIUM

MOBILITY

ECONOMY

LANGUAGE



Online filing and verification of applications, online payments, booking marriages



Registry

online service to check the status of citizens' applications

APPLICATION NUMBER

NAME AND SURNAME OF THE PETITIONER

DATE OF REQUEST

SEARCH FOR APPLICATION

Suggestions and complaints

MyCluj app



Online payments

without authentication



Identity documents

application submission schedule



Civil status

scheduling marriages



Parking request

filing an application



The blue ticket

communicating online with citizens



Local Official Gazette



Submit applications

SEE ALL FORMS



Agri-food markets

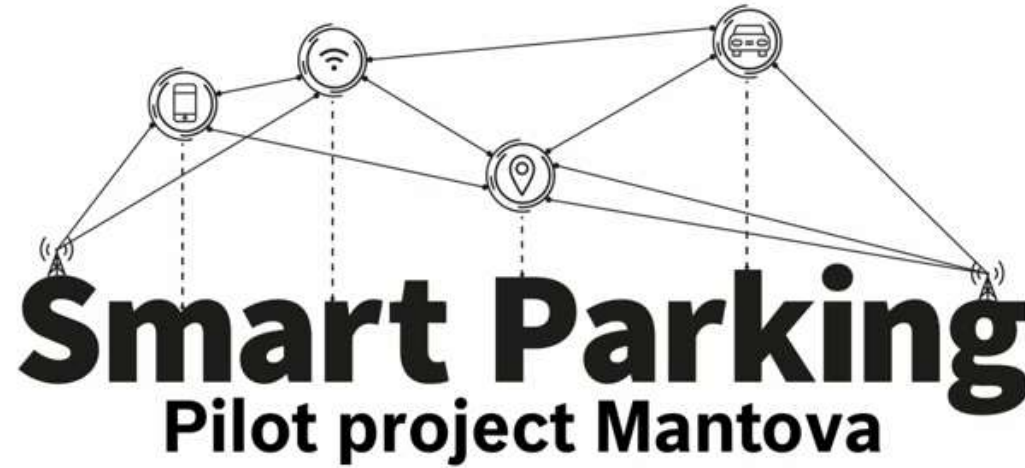
GREEN SPACES

The first smart street in Romania was built by Cluj-Napoca City Hall with European funding and has all the facilities of a modern public space (green), adapted to current technological and urban mobility realities

Locals and tourists are provided with four parking spaces for charging electric cars and 15 parking spaces for cars, 30 parking spaces for bicycles / electric scooters and 22 parking spaces for bicycles, free Wi-Fi and USB sockets for charging mobile devices.



SMART PARKING



BOSCH
Tecnologia per la vita

cellnex

LGH
LINEA GROUP HOLDING
LGH è parte del gruppo A2A



COMUNE
di
MANTOVA

aster
Agenzia Servizi al Territorio



UNIMORE
UNIVERSITÀ DEGLI STUDI DI
MODENA E REGGIO EMILIA

ECO ENERGY SOURCE

Cluj is developing a photovoltaic and wind farm in Lomb, where it will be investigated how profitable this technology is for the Cluj area and the North-West area, taking into account the climate, but also other factors.



